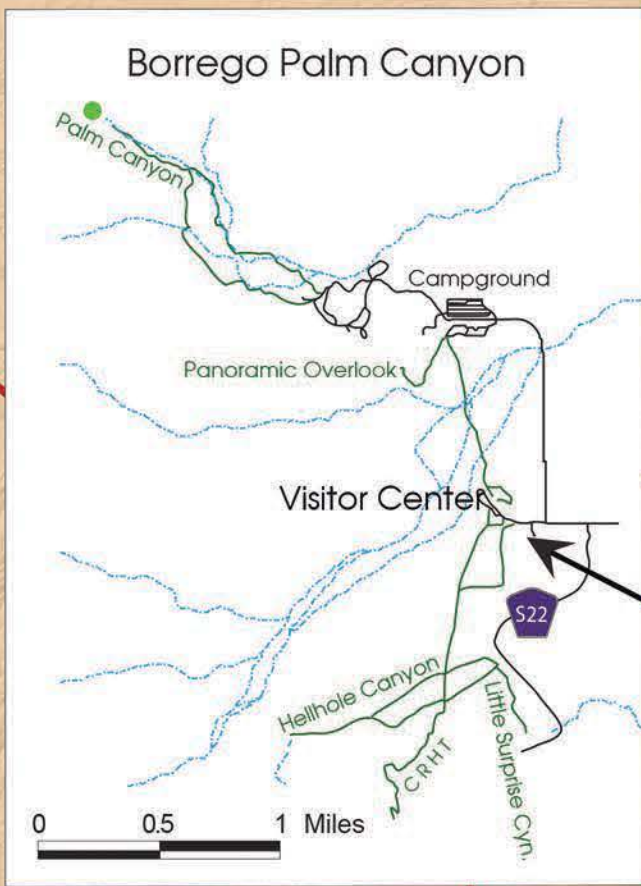





# ANZA-BORREGO DESERT STATE PARK®



**Coyote Canyon**  
Seasonal Closure  
June 1 to October 1

### Legend

- Railway
- Interstate Highway
- Paved Roads
- Primitive Roads
- Hiking Trails
- Historic Corridor
- Intermittent Stream
- Route to Flower Fields
- Flower Fields
- Spring
- Point of Interest
- Palm Grove Locations
- Developed Camping
- Primitive Camping
- Interstate Highway
- State Highway
- County Highway



© 2016 California State Parks

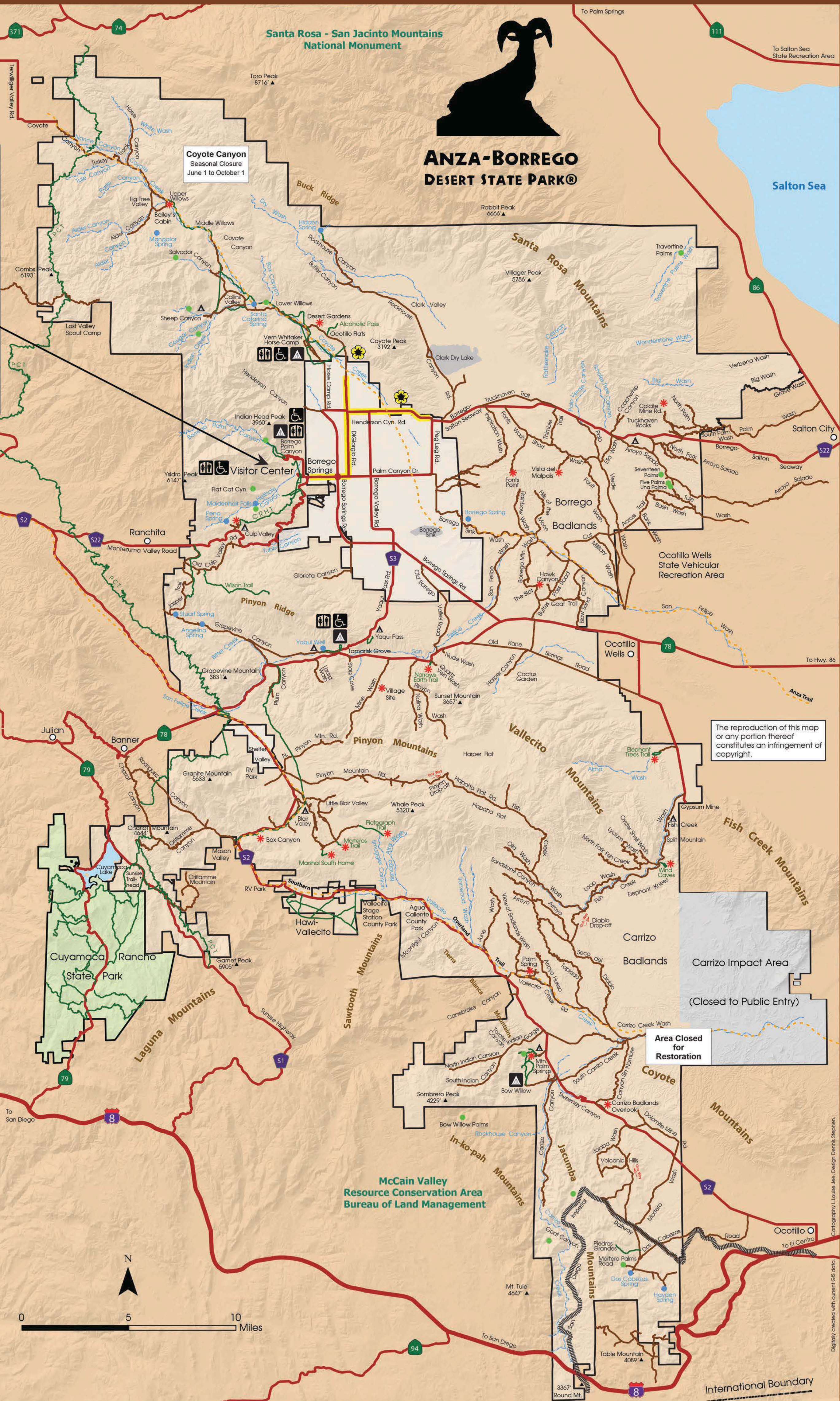
### Vehicle and Travel Regulations

**Vehicles:**  
All vehicles operated in the park must be street legal and on designated routes. Off-road travel is not permitted. OHVs are encouraged to visit nearby Ocotillo Wells State Vehicular Recreation Area.

**Bicycles:**  
Both primitive jeep roads and paved roads are open to bicycles but remember, bikes are excluded from all hiking trails except Coyote Canyon and Hawi-Vallecito. Off-trail travel is not permitted.

**Equestrians:**  
Equestrians are welcome on all primitive roads, equestrian trails in Coyote Canyon and Hawi-Vallecito, the California Riding and Hiking Trail and the Pacific Crest Trail. Remember, horses are excluded from all other hiking trails. Off-trail travel is not permitted.

**NOTE: When a trail joins a primitive road, the trail will follow the road.**



The reproduction of this map or any portion thereof constitutes an infringement of copyright.

