

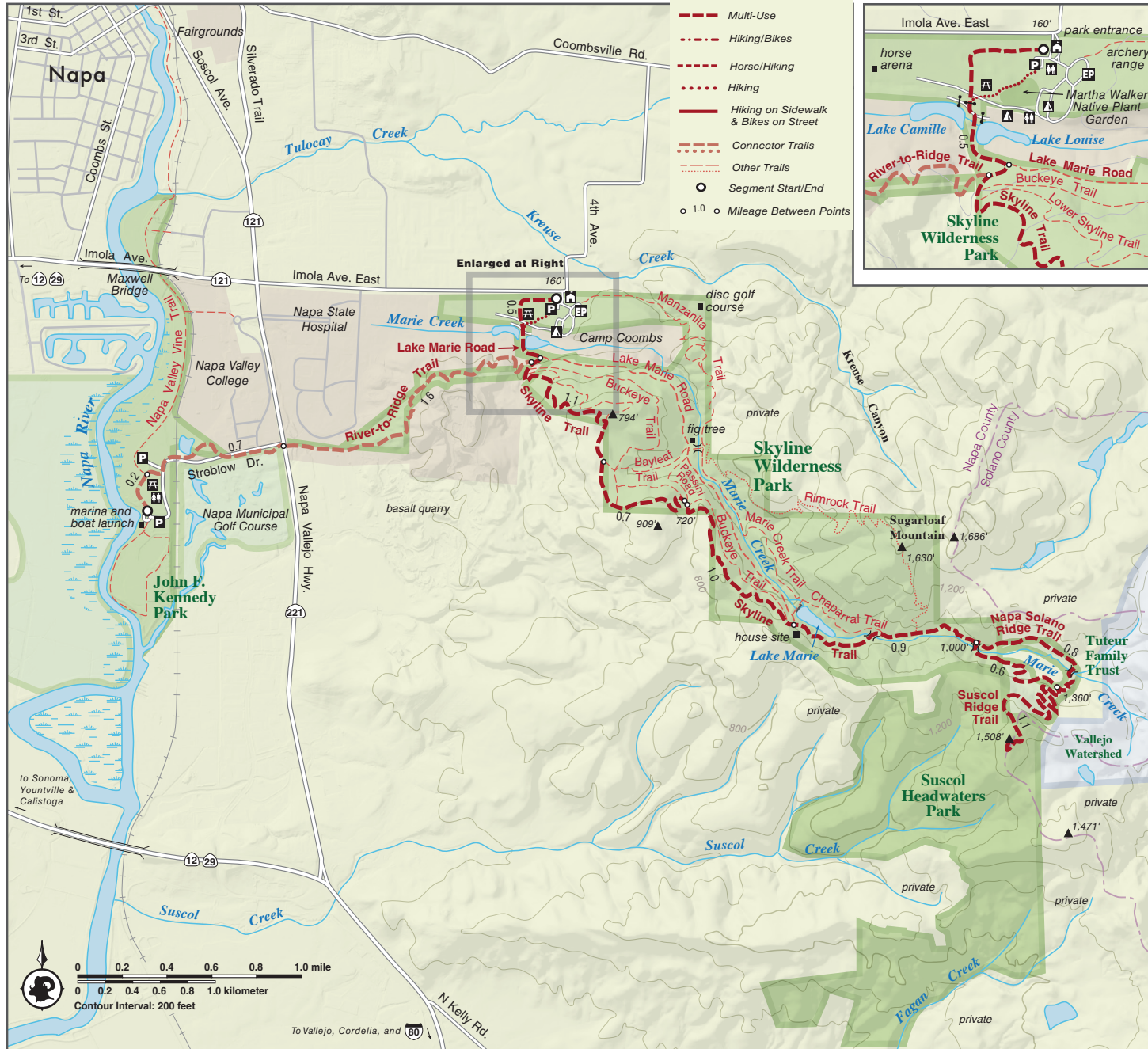


# Skyline Wilderness Park and Napa Solano Ridge Trail

Napa County

From: Park Entrance

To: end of Suscol Ridge Trail



Post your photos @bayarearidgetrail and see them on our website. #bayarearidgetrail



## Skyline Wilderness Park and Napa Solano Ridge Trail

**From:** Park Entrance

**To:** end of Suscol Ridge Trail

**Length:** 6.4 miles one-way for hikers, 6.5 miles one-way for multiuse route (plus 6.4 or 6.5-mile return; alternative return route possible).

**Elevation Gain/Loss:** 1,400 feet/550 feet one-way

**Accessibility:** Hikers, equestrians, and mountain bikers

East of Napa State Hospital in the southern foothills of Napa Valley, this out-and-back trail is for hardy hikers and careful equestrians and mountain bikers; it is a narrow, often rocky trail. After a steep climb in the first mile, the trail ambles through oak forests and high grasslands to views of North Bay marshes and mountains and then continues beside a perennial stream to the far reaches of the park. In October 2017, the Atlas Fire burned through most of Skyline Wilderness Park and fire damage surrounds the Ridge Trail. In the months following the fire, hundreds of damaged trees were removed. Start early, particularly on warm days, and take plenty of water. The trail arrives to Suscol Headwaters Park, which opened in 2020 and has several new trail slated to be opened by 2022. In addition to the vistas along the ridge, hikers may choose to enjoy the short hike up to Prominent Peak.

This trail description is excerpted from the 2019 Guidebook. For details on all trails, trailheads and more [buy the book](#) from Wilderness Press.

For more resources to plan your trip, visit our [Trail Tools](#) page.

LINK to buy book: <https://advkeen.co/BayAreaRidgeTrail>

LINK to Trail Tools: <https://ridgetrail.org/trail-tools/>

Post your photos [@bayarearidgetrail](#) and see them on our website. [#bayarearidgetrail](#)