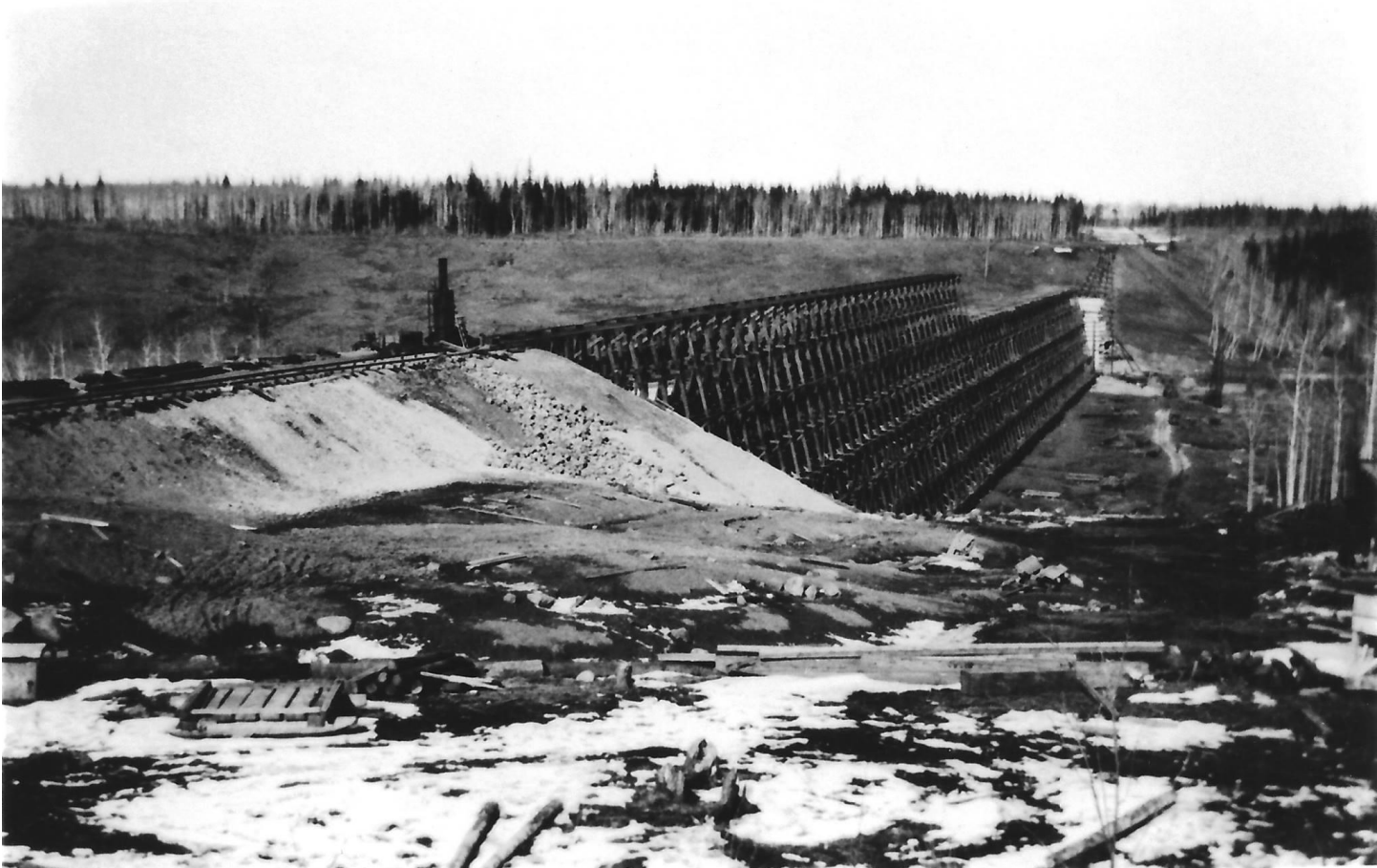


Building the Beaver River Trestle 1931 – 1952

The coming of the railroad to Beaver Station or LeGoff in 1931 and then to Grand Centre in 1951 over the 102 foot the Beaver River Trestle was a big change for the entire Cold Lake area. Developments in the area affected the people of the surrounding communities. The opening of the Grand Centre creamery by Mr. Toppenberg, proved a boon to the many farmers who had no stable market for their dairy products.



Beaver River train trestle construction at Beaver Crossing 1930



Beaver River train trestle construction at Beaver Crossing, Alberta 1931



Hudson's Bay Company Post at Legoff, Alberta overlooking the Beaver River June 1929

The construction and arrival of the Cold Lake Air Base in 1952 was the next great important event the area. Businessmen benefited because of increased business and the many farmers and residents found work and they were at last paid a set wage for their services. The main runway and two hangers were usable by spring 1954. The work at the Base was continued for many years as new facilities were added. A school started in 1954, roads paved in 1955, an Airbase hospital in 1954 and in 1977 the Primrose Bombing Range was added.

Up until 1952 the end of rail was at Beaver Station, so all local people had to go there to get their freight. With the building of CFB Cold Lake the trestle was completed and passengers and freight could go into Grand Centre.



Completed Trestle 1950s