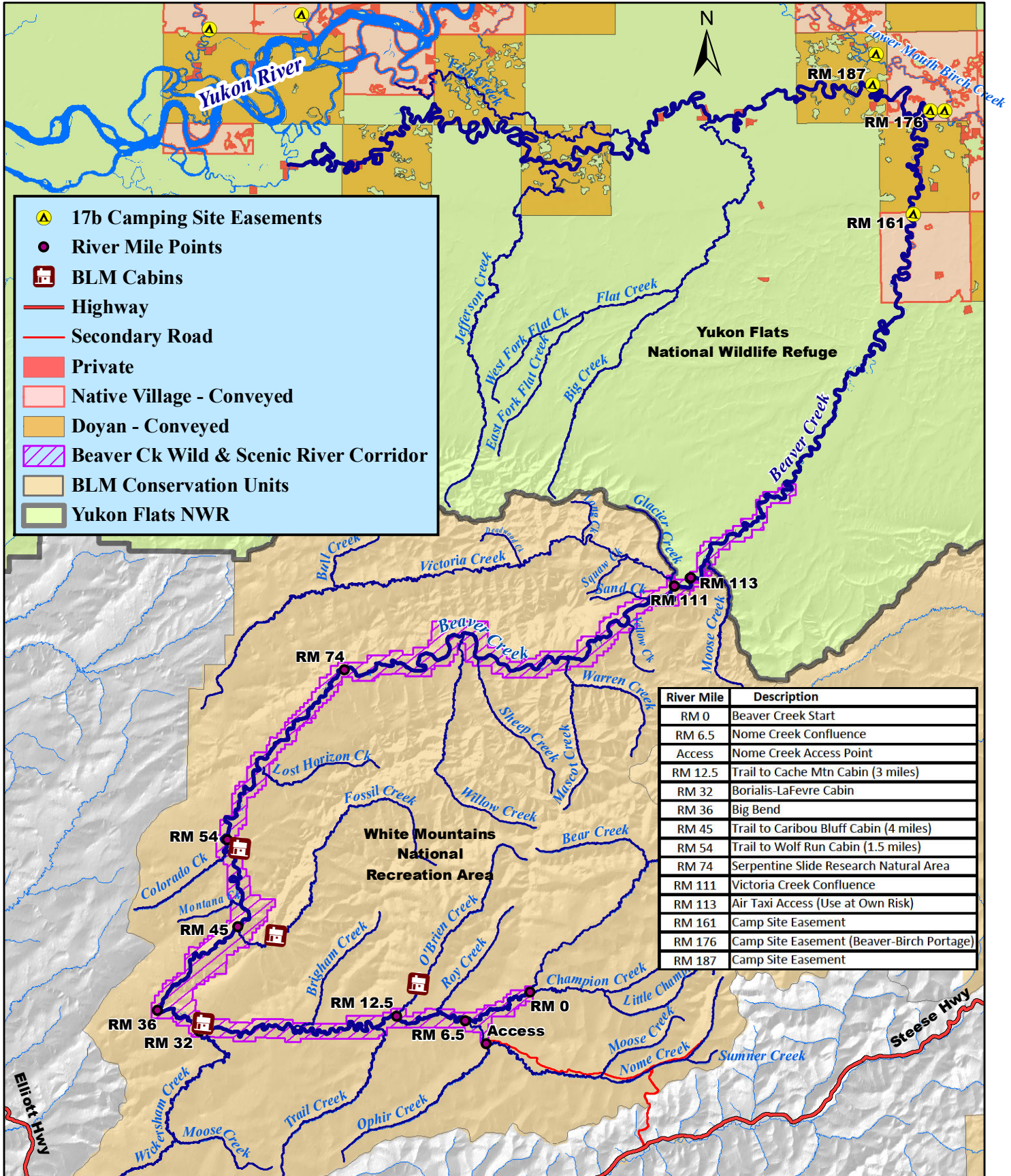




U.S. Fish & Wildlife Service

Yukon Flats National Wildlife Refuge, Alaska

Beaver Creek Water Trail with Access



- 17b Camping Site Easements
- River Mile Points
- BLM Cabins
- Highway
- Secondary Road
- Private
- Native Village - Conveyed
- Doyan - Conveyed
- Beaver Ck Wild & Scenic River Corridor
- BLM Conservation Units
- Yukon Flats NWR

River Mile	Description
RM 0	Beaver Creek Start
RM 6.5	Nome Creek Confluence
Access	Nome Creek Access Point
RM 12.5	Trail to Cache Mtn Cabin (3 miles)
RM 32	Borialis-LaFevre Cabin
RM 36	Big Bend
RM 45	Trail to Caribou Bluff Cabin (4 miles)
RM 54	Trail to Wolf Run Cabin (1.5 miles)
RM 74	Serpentine Slide Research Natural Area
RM 111	Victoria Creek Confluence
RM 113	Air Taxi Access (Use at Own Risk)
RM 161	Camp Site Easement
RM 176	Camp Site Easement (Beaver-Birch Portage)
RM 187	Camp Site Easement