

Mark Twain National Forest

Missouri

Berryman Trail



Eastern Region, USDA Forest Service

September 13, 2010

Highlights

The Berryman Trail starts at Berryman Campground, the site of a Civilian Conservation Corps camp, and traverses 24 miles of scenic Ozark countryside. It winds through timbered stands of oak, pine and bottomland hardwood, climbing switchback fashion from low bottoms to high cherty ridges. Interesting flora and fauna abound in the old fields, glade-like rock outcroppings and deep forest. Trail users are insured a measure of solitude and quiet, as motor vehicles are prohibited on the trail. Mountain bikes are permitted; however, users must yield the right-of-way when encountering horseback riders. The western section of the trail also serves as part of the Courtois Section of the Ozark Trail.

Trail

Mileage markers are located at intervals along the trail. They start at Berryman Campground, with numeric values increasing proceeding clockwise around the loop trail.

Camping is permitted anywhere along the trail. Please be careful with fire and pack out non-burnable trash. Dispose of human waste in cat holes dug 6-8 inches deep at least 100 feet away from the trail. Tying horses directly to trees is prohibited. Use a hitch line, hobbles, or picket line.

For More Information

*Potosi/Fredericktown Ranger District
10019 Hwy 8 West, Potosi, MO 63664
Phone: (573) 438-5427
Fax: (573) 438-2633
Hours: Monday-Friday, 8 am-4:30 pm*

Directions: From Potosi, 16 miles west on State Highway 8. Turn right on County Road 207 and go approximately 1.5 miles.

Difficulty Level: Moderate

Length: 24 miles

Best Seasons: Fall, winter, spring

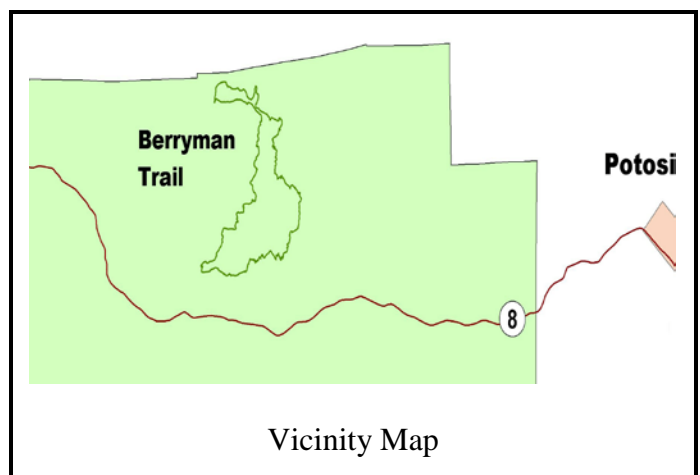
Restrictions: No motorized use.

Safety: During temperate months, be prepared for biting insects, poison ivy and high temperatures. Be advised of hunting seasons. Avoid using the trail during excessively wet periods.

Washington County Sheriff 573-438-5478
Washington County Hospital 573-438-5451

Surface Type: Unsurfaced, native material

Travel Time: 8 hours by horseback Be careful when crossing streams, particularly during high water: be prepared for wet feet.



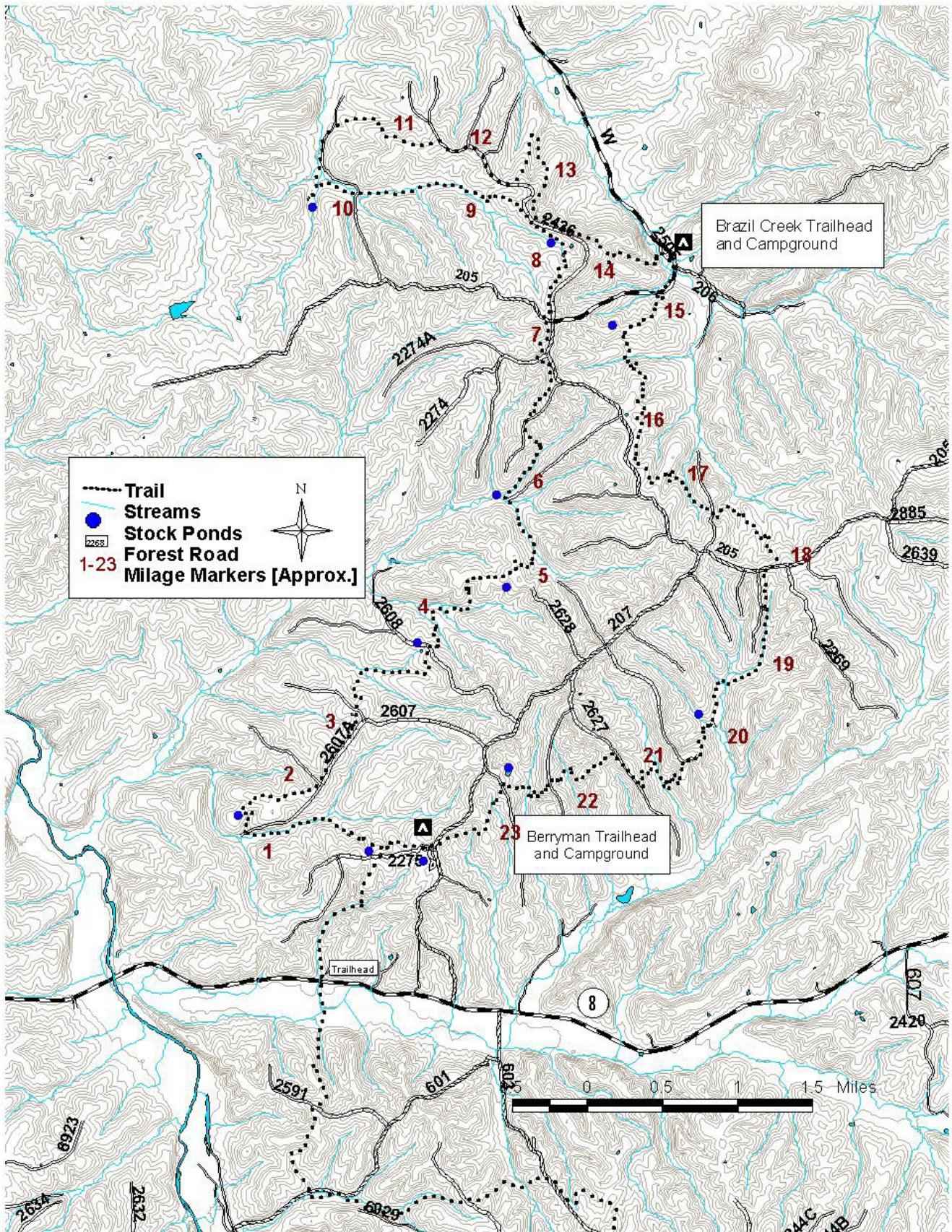
“The USDA is an equal opportunity provider and employer.”

Mark Twain National Forest

401 Fairgrounds Road, Rolla, MO 65401

www.fs.usda.gov/mtnf





Berryman Trail