



# Black Creek Hiking Trail

## De Soto Ranger District



**Ranger District Office**  
654 Frontage Drive West  
Wiggins, MS 39577  
601-528-6160



**Location**  
1700 Highway 29  
Brooklyn, MS 39425



**Open Dates/Hours**  
Open year round unless weather conditions require closures.



**Campsites**  
Primitive camping is available



**Water**  
Water is available if using filter



**Restrooms**  
Restrooms are not available



**Trash Pick-up**  
Pack out all trash



**Fees**  
Day Use – Free

Discover the hidden beauty of the piney woods in the Gulf Coastal Plain by hiking one of Mississippi's longest and most challenging trails. The Black Creek Trail is 40 miles in length and travels next to the Black Creek Wild and Scenic River, over rolling hills and meanders through the flat land of the Black Creek flood plain. Approximately 10.8 miles of the trail is located in the Black Creek Wilderness. Hikers can access the trail from Hwy 29 Trailhead, Fairley Bridge Landing, CCC Camp, and Big Creek Landing.

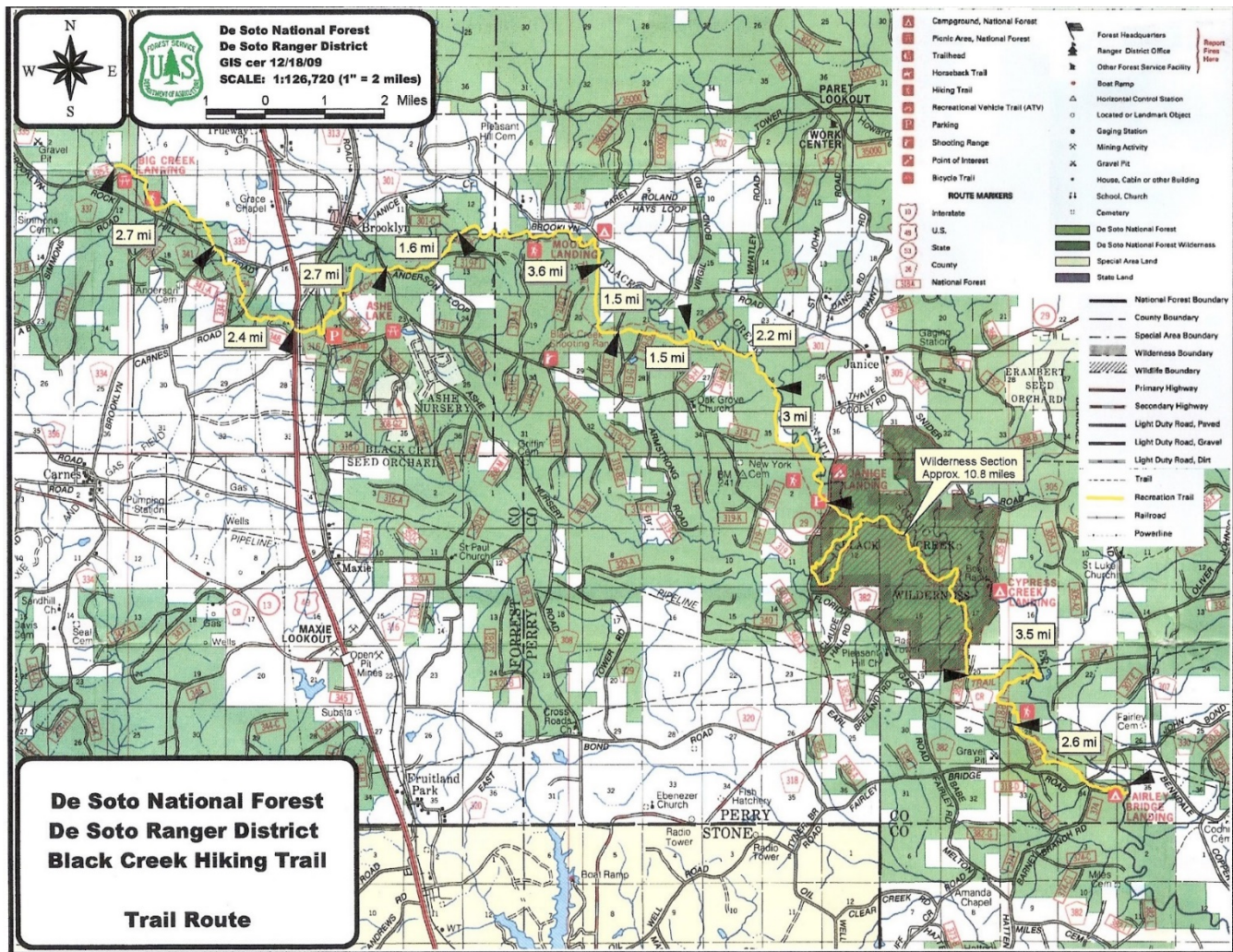
### Trails nearby:

**Closest Town:** Brooklyn  
**County:** Forest & Perry

**Latitude:** 30° 59' 12.440  
**Longitude:** 89° 03' 15.230



# Black Creek Hiking Trail



[www.fs.usda.gov/recremain/mississippi/recreation](http://www.fs.usda.gov/recremain/mississippi/recreation)

USDA is an equal opportunity provider, employer and lender.



You are responsible for your own safety. All outdoor activities have inherent risks and you may encounter a variety of unexpected and/or dangerous conditions. It is your responsibility to be informed and take precautions. Learn more at [www.fs.usda.gov/r8](http://www.fs.usda.gov/r8).