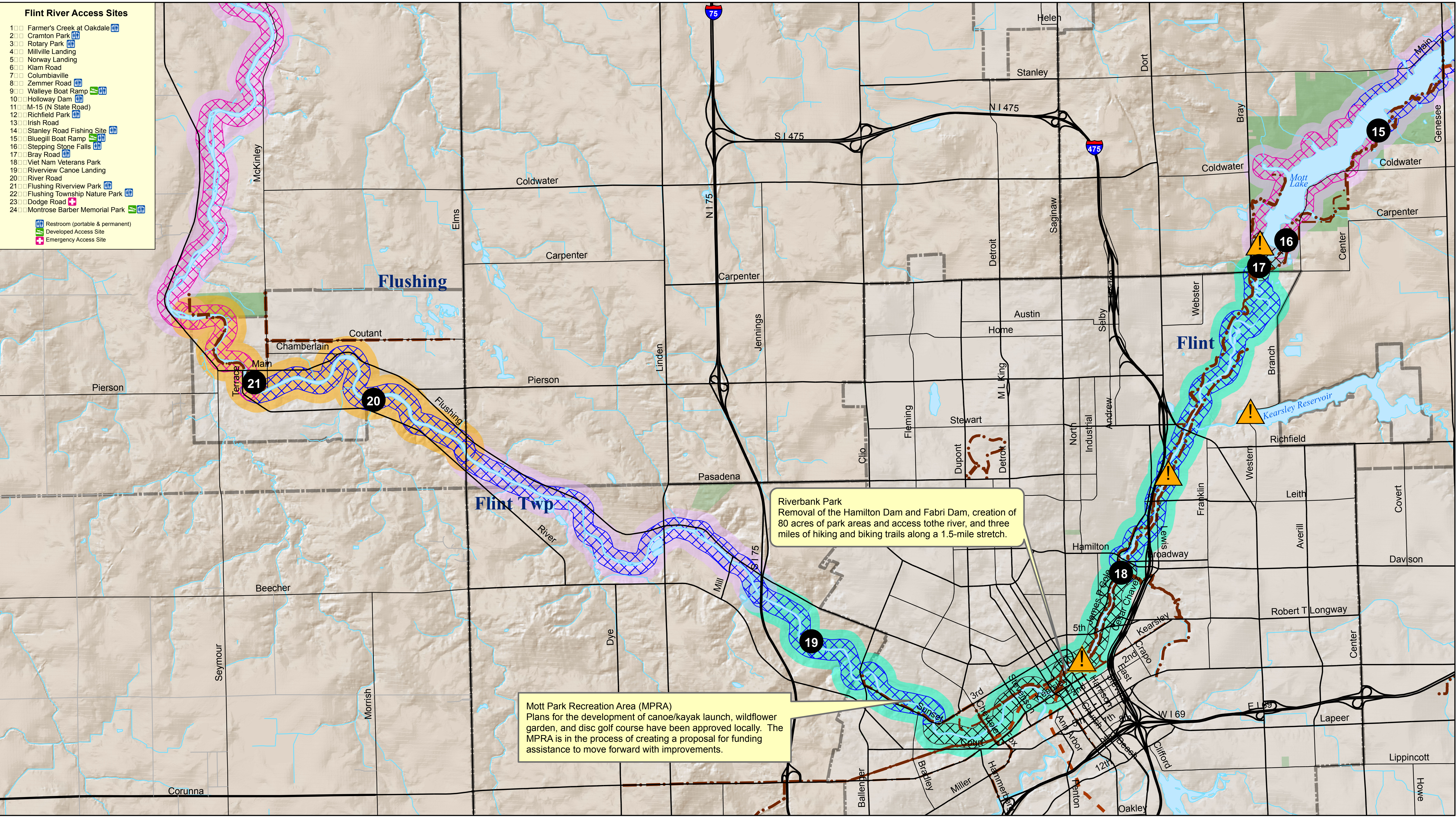


- ### Flint River Access Sites
- 1 Farmer's Creek at Oakdale
 - 2 Cranston Park
 - 3 Rotary Park
 - 4 Millville Landing
 - 5 Norway Landing
 - 6 Klam Road
 - 7 Columbiaville
 - 8 Zemmer Road
 - 9 Walleys Boat Ramp
 - 10 Holloway Dam
 - 11 M-15 (N State Road)
 - 12 Richfield Park
 - 13 Inish Road
 - 14 Stanley Road Fishing Site
 - 15 Bluegill Boat Ramp
 - 16 Stepping Stone Falls
 - 17 Bray Road
 - 18 Viet Nam Veterans Park
 - 19 Riverview Canoe Landing
 - 20 River Road
 - 21 Flushing Riverview Park
 - 22 Flushing Township Nature Park
 - 23 Dodge Road
 - 24 Montrose Barber Memorial Park
- Restroom (portable & permanent)
 - Developed Access Site
 - Emergency Access Site



Riverbank Park
Removal of the Hamilton Dam and Fabri Dam, creation of 80 acres of park areas and access to the river, and three miles of hiking and biking trails along a 1.5-mile stretch.

Mott Park Recreation Area (MPRA)
Plans for the development of canoe/kayak launch, wildflower garden, and disc golf course have been approved locally. The MPRA is in the process of creating a proposal for funding assistance to move forward with improvements.

GCMPC
GENESEE COUNTY METROPOLITAN PLANNING COMMISSION

GENESEE COUNTY PARKS

FLINT RIVER WATERSHED COALITION

NATIONAL PARK SERVICE
Rivers, Trails, and Conservation Assistance

0 0.325 0.65 1.3 Miles

k:\trans\trail\TrailProject_Maps_Timelines\Water Trails 2016\Maps\Water_Trail_Skills_Zones_new.mxd

Flint River Access Sites

Dams

Genesee County Parks Property

Lapeer County State Game Area

Flint River Water Trail

Genesee County and Lapeer County

Land Trail Connections

- Existing
- Funded

Skill Level

- Beginner
- Intermediate
- Advanced

Trail Character

- Natural
- Small Town
- Urban Core

