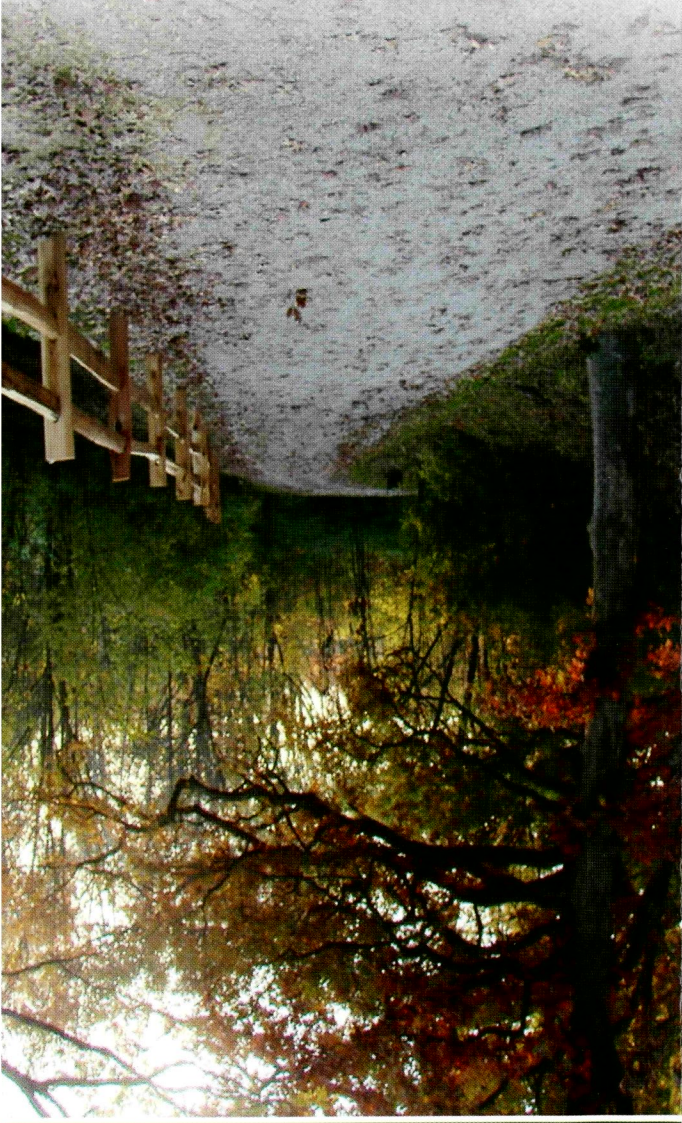


INFORMATIONAL MAP



GENERAL DACEY TRAIL

www.daceytrail.org



LAKE SHELBYVILLE is 11,000 acres of surface waters with 172 miles of shoreline and approximately 23,000 acres of surrounding public lands that are dedicated as state parks, Federal public recreation areas, fish and wildlife management areas. Lake Shelbyville is the outdoor recreation hub of Central Illinois with over 3.0 million visitors a year. This significant tourist destination is the centerpiece of the General Dacey Trail network.



The GENERAL DACEY TRAIL is a multi-use, recreational trail—accessed mainly by walkers, runners and bikers. As you move along the pathways of the Dacey Trail, you will find nature at its best—with many scenic views of Lake Shelbyville. A detailed map is provided with points of interest along the way. We hope you enjoy the experience and come back again!

(A) TRAILHEAD/PARKING
 Located in Forest Park. This is a good place to start on the Dacey Trail. A pavilion is available at this location—a great place for a picnic! The map on the reverse side shows the mileage starting/stopping here.

(B) FOREST PARK
 Enjoy the many activities the park provides—swimming at the Family Aquatic Center, let the kids run at the playground, fishing at the Lagoon, catch a baseball game, or jump in for a game of basketball or sand volleyball.

(C) TRAILHEAD/PARKING
 From here you can ride over to the beach—a playground is also available here. Or, simply take a rest at “the point” as you enjoy the scenery of the lake.

(D) 9TH STREET BOAT RAMP
(E) 9TH STREET BEACH
 Enjoy a day at the beach and bring along a picnic lunch (grills are also available). There is also a playground area as well as a sand volleyball court.

(F) DAM WEST TRAILHEAD OVERLOOK AND FITNESS EQUIPMENT
 Stop here and enjoy a beautiful view of Lake Shelbyville, Fitness Equipment available here.

(G) LAKE SHELBYVILLE VISITOR'S CENTER
 Find out more about Lake Shelbyville!
 Open seasonally.

(H) LAKE SHELBYVILLE OFFICE OF TOURISM
 Find out all you need to know about Lake Shelbyville and the surrounding area. Open year round. www.lakeshelbyville.com

(I) DOWNTOWN SHELBYVILLE
 Unique gift items, restaurants, and our local Chamber of Commerce can be found here!

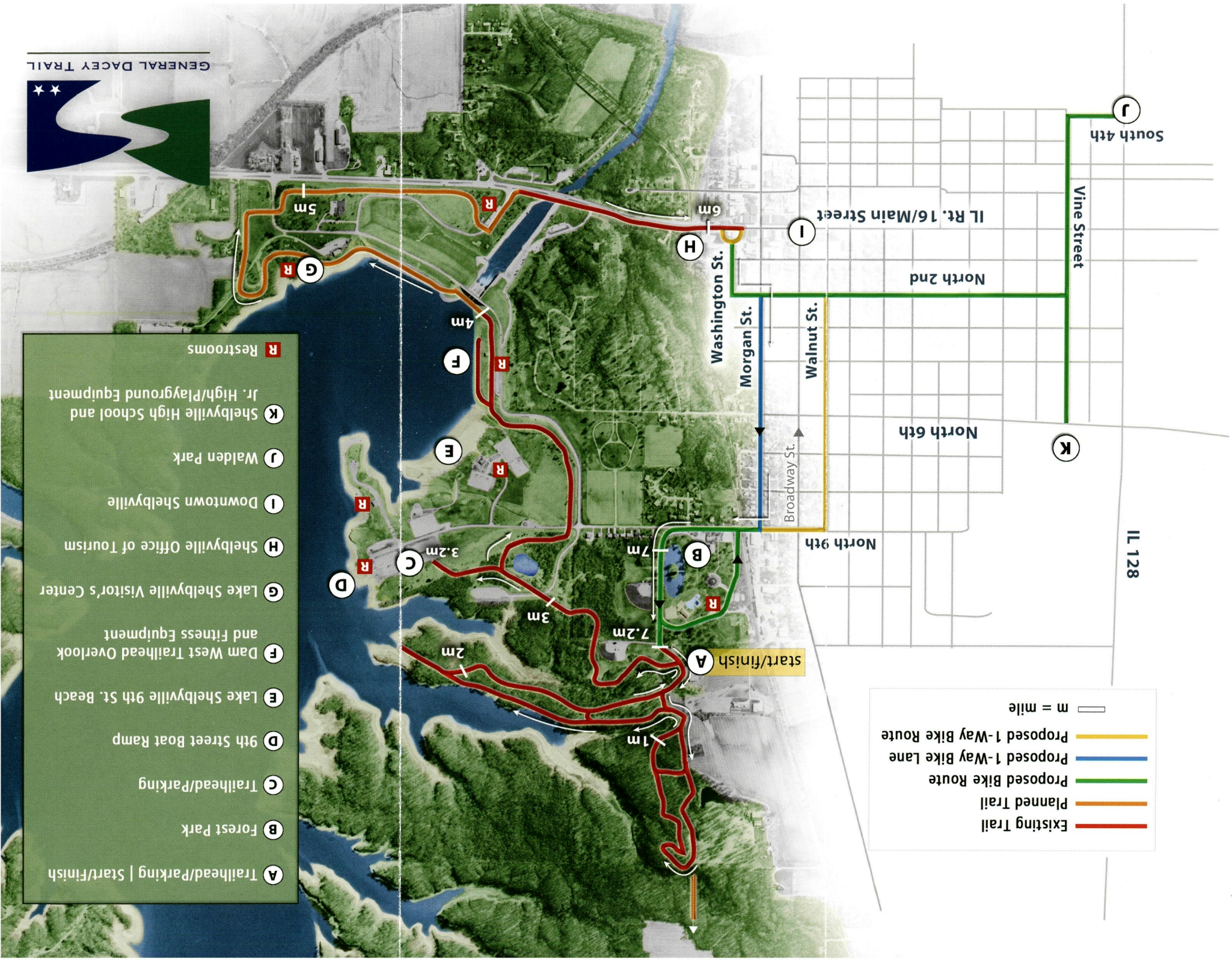
(J) WALDEN PARK
 Mini-park and baseball field.

(K) SHELBYVILLE HIGH SCHOOL AND JR. HIGH/PLAYGROUND EQUIPMENT
 There are several play areas on the school grounds as well as an all weather track.



- A** Trailhead/Parking | Start/Finish
- B** Forest Park
- C** Trailhead/Parking
- D** 9th Street Boat Ramp
- E** Lake Shelbyville 9th St. Beach
- F** Dam West Trailhead Overlook and Fitness Equipment
- G** Lake Shelbyville Visitor's Center
- H** Shelbyville Office of Tourism
- I** Downtown Shelbyville
- J** Walden Park
- K** Shelbyville High School and Jr. High/Playground Equipment
- R** Restrooms

— Existing Trail
— Planned Trail
— Proposed Bike Route
— Proposed 1-Way Bike Lane
— Proposed 1-Way Bike Route
 m = mile



IL 128

South 4th

Vine Street

North 2nd

North 6th

North 9th

IL Rt. 16/Main Street

Washington St.

Morgan St.

Walnut St.

Broadway St.

start/finish

5m

6m

4m

3.2m

3m

7.2m

7m

3m

2m

1m

K

I

H

F

E

C

D

B

A

G

R

R

R

R

R

R

R

R