

# North Western State Trail

*A beautiful Northern Michigan experience!*

Discover the natural beauty and quaint small towns along "The Fishing Line" from Petoskey to Mackinaw City on the North Western State Trail. The trail runs along the former Grand Rapids and Indiana line of Pennsylvania Railroad (once known as "The Fishing Line") that opened in 1882 and continued in some areas until 1992.

The North Western State Trail spans 32 miles from M-119 in Petoskey to downtown Mackinaw City. The first 7 miles of the trail from M-119 at Spring Lake Park to Powers Road in Alanson is asphalt. The trail then continues for 0.7 miles through Alanson as a bike route along Milton Road to Chicago Street, where it once again aligns with the railroad. For 23 miles from Chicago Street to Trails End Road, the trail is packed limestone, a wonderful year 'round multi-use trail surface. At Trails End Road, for 1.3 miles the trail returns to asphalt as it heads into Mackinaw City.

## Trail highlights: What to see and do along the trail!



### PETOSKEY

The trail begins at Spring Lake Park on M-119 where there is parking, restrooms, an interpretive trail and picnic facilities. To get to downtown Petoskey (3 miles) or Harbor Springs (6 miles) take the Little Traverse Wheelway via the pedestrian crossing of M-119. The trail runs adjacent to small lakes and beautiful nature preserves. At the Round Lake overlook a small beach can be accessed via the Little Traverse Conservancy's Fochtman Nature Preserve trail.



## Trail highlights!

### CONWAY & ODEN

The trail continues through the small community of Conway and on to the Michigan Fisheries Visitor Center where there is parking and bathrooms (pictured at right). The Center is a great destination with interesting interpretive displays, hiking trails and the Oden Fish Hatchery. Back on the trail and you go through Oden, across a boardwalk and along US-31.



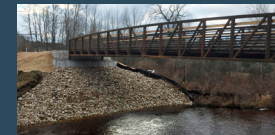
### ALANSON

While you are in Alanson take time to enjoy its small town charm. There are great restaurants and shops, the Inland Waterway Museum, the swinging bridge and Crooked River locks. And, do not miss Sanctuary Park (pictured, at the end of East Street) where a hand propelled ferry takes you to an island boardwalk trail. Bathrooms and parking available next to the Township Hall (bathrooms are around back near playground).



### PELLSTON

On your way to Pellston you go through the small community of Brutus and then over the beautiful Maple River on a new bridge. In Pellston the Community Park and depot serve as a trailhead. Check out the shops and restaurants and watch planes take flight at the Pellston Regional Airport.



### LEVERING AND CARP LAKE

The trail continues through small railroad communities of Van, Levering and Carp Lake; wildlife viewing is superb near the Carp Lake River. The trail traverses over four miles of State Forest land before it descends into Mackinaw City.

### MACKINAW CITY

The trail ends (or begins!) in Mackinaw City, one of the most popular tourist destinations in Michigan. At the Mackinaw City Trailhead there are restrooms, parking and direct connection to over 130 more miles of trail via the North Central State Trail. From the Trailhead you can easily access downtown, shops, restaurants and ferries to Mackinac Island.



*This map courtesy of the following organizations:*

### Top of Michigan Trails Council



1687 M-119  
Petoskey, MI 49770  
(231) 348-8280  
[www.trailsCouncil.org](http://www.trailsCouncil.org)

Our mission is to advocate and facilitate the development and maintenance of a safe, multi-use, year-round recreational trail system in Alpena, Antrim, Charlevoix, Cheboygan, Emmet, Montmorency, Otsego and Presque Isle counties.

### Become a member!

Call the number above for membership details and for information about Northern Michigan trails. Please help our trail efforts through a tax-deductible donation.



### Emmet County

200 Division St.  
Petoskey, MI 49770  
(231) 348-1704  
[www.emmetcounty.org](http://www.emmetcounty.org)

Emmet County is located in the Northwest tip of Michigan's Lower Peninsula and is a place like no other. Here, a rich history meets unparalleled natural beauty; where stretches of sandy beaches, quaint downtowns and year-round activities beckon families, entrepreneurs, outdoor enthusiasts and everyone in between. Emmet County is also home to the Headlands, one of just several International Dark Sky Parks in the United States!

### Learn more about Northwest Michigan!

For complimentary area maps, parks and community information, and Emmet County's annual magazine, Imagine, contact [info@emmetcounty.org](mailto:info@emmetcounty.org) or call (231) 348-1704.

TRAIL MAP

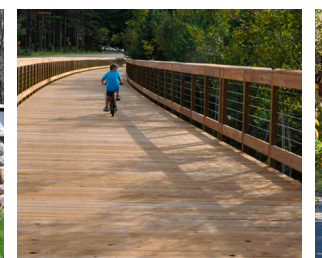
## North Western State Trail



[www.trailsCouncil.org](http://www.trailsCouncil.org)

**32 miles**

- Petoskey
- Alanson
- Pellston
- Mackinaw City





# North Western State Trail

Connecting Petoskey, Alanson, Pellston & Mackinaw City  
 ▪ 32 miles ▪

## Point-to-Point mileage

### M-119 (Petoskey) to Alanson: 7.5

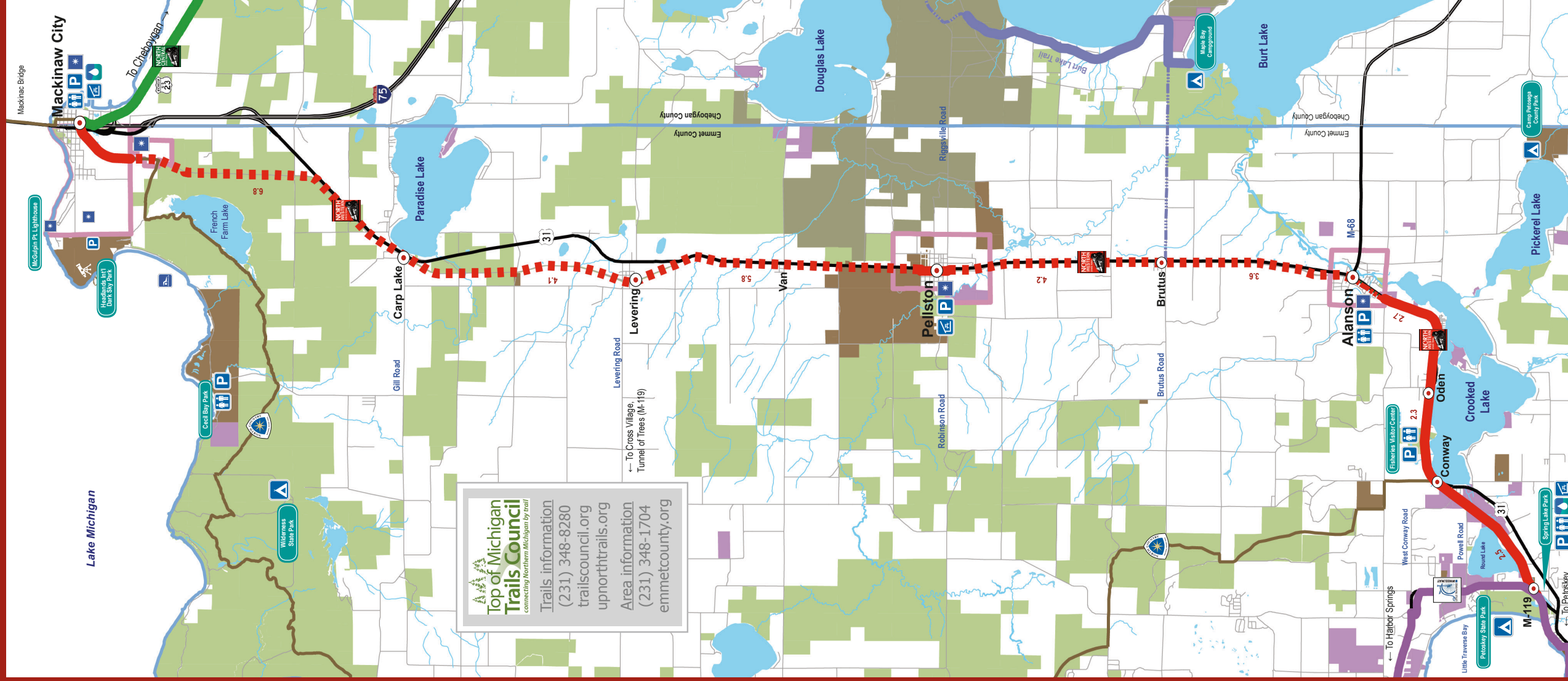
M-119 to Conway: 2.5  
 Conway to Oden: 2.3  
 Oden to Alanson: 2.7

### Alanson to Pellston: 7.8

Alanson to Brutus: 3.6  
 Brutus to Pellston: 4.2


### Pellston to Mackinaw City: 16.7

Pellston to Levering: 5.8  
 Levering to Carp Lake: 4.1  
 Carp Lake to Mackinaw City: 6.8



**Top of Michigan Trails Council**  
 connecting Northern Michigan by trail  
 Trails information  
 (231) 348-8280  
 trailscouncil.org  
 upnorthtrails.org  
 Area information  
 (231) 348-1704  
 emmetcounty.org

### Map Legend



- asphalt surface
- shared road route
- packed limestone
- Burt Lake Trail limestone
- Burt Lake Trail, proposed
- Little Traverse
- Wheelway, asphalt
- North Central State Trail, limestone
- North Country Trail National Scenic Hiking Trail
- Denotes point of interest

All Emergencies:  
Dial 9-1-1

Thank you to the NWST funding partners!



## Trail etiquette

Obey traffic signs.  
 Stop, look & listen for motor traffic before crossing.

This is a multi-use trail; be respectful and share the path.  
 Always stay to the right side of the trail except to pass.  
 Travel at a safe speed.



Move off the pathway when stopping.  
 Pets must be on-leash and under control.  
 Wear a bicycle helmet.

When passing, announce your presence with a bell or by saying, "On your left!"  
*Please do not litter!*