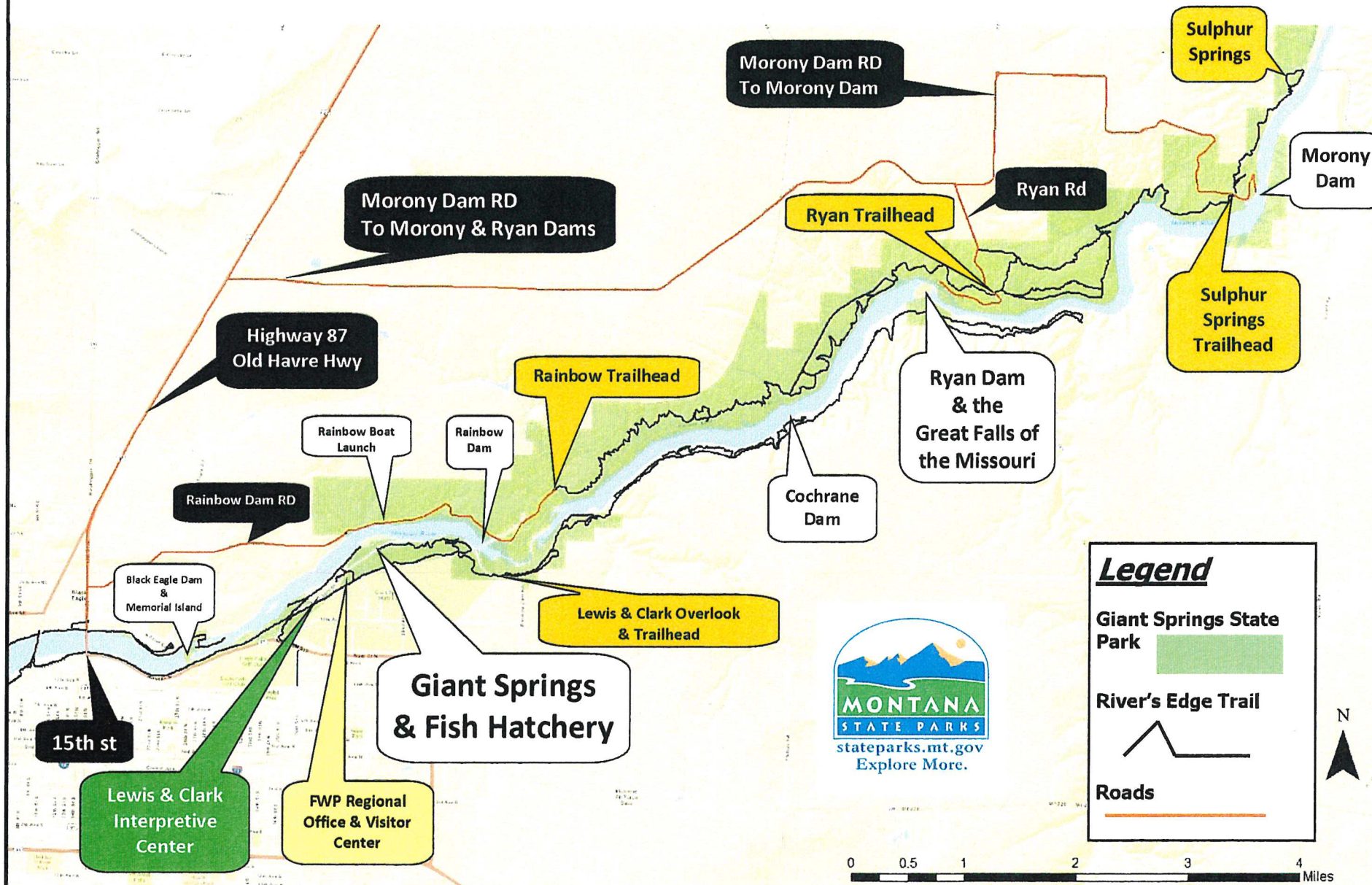


Giant Springs State Park



Important Phone #'s
 Emergency, 911
 Giant Springs State Park, Ranger Station (406)727-1212

stateparks.mt.gov

Explore More

Giant Springs State Park North & South Shore Hunting information, regulations and access information - 2017 Hunting Season

All hunters must possess this map and the rules in their possession while hunting, this paperwork is your permission to hunt.

Additional copies may be obtained at the FWP Region 4 Headquarters, 4600 Giant Springs Rd, Great Falls, MT. For hunting information call: (406)727-1212

Please read these regulations carefully and respect the restrictions that have been put in place for your safety and others. The map shown on the reverse of these rules delineates areas with special weapon restrictions, safety zones, no hunting areas, waterfowl only areas and parking areas.

General Hunting Rules & Regulations:

- Dogs must be on a leash in parking lots. Clean up after your pet, remove all waste and properly dispose of it.
- Blinds must be portable, and removed or dismantled at the conclusion of each hunting day. Do not cut or damage live trees or vegetation.

NORTH SHORE SPECIFIC RULES & REGULATIONS:

- Hunting is only permitted for big game, upland game birds, and waterfowl during established seasons. There is no other hunting allowed and no plinking or recreational shooting which includes sighting in a firearm or target shooting.
- Hunting Districts are Deer/Elk 405 and Antelope 404.
- **Only: archery & shotgun hunting is allowed in the "Weapons Restriction Areas".**
- Property boundaries, safety zones, and weapon restriction area boundaries are not always fenced or marked, you are responsible to know where you are at all times.
- No shooting in designated safety zones. No shooting from, or across roadways, trails, parking areas, established recreation sites, and/or near NWE facilities.
- Game carts and bicycles may be used for game retrieval.
- Walk in access only, park in designated parking locations. No motorized vehicles or horses are allowed.

The area below the high water mark from Rainbow Dam to Morony Dam is closed to all recreational use. Hunters may hunt from above the high water mark, but must not enter the water for retrieval of game or placement of decoys. Dogs may be used for waterfowl retrieval.

Adjacent lands administered by the Montana Department of Natural Resources and Conservation (DNRC) and Bureau of Land Management (BLM) are shown on the map for reference; these lands are not included in the North Shore area or covered by these regulations but are accessible from the North Shore area for hunting. All normal regulations and licenses for these lands otherwise apply.

SOUTH SHORE SPECIFIC RULES & REGULATIONS: Waterfowl ONLY

- Waterfowl hunting is allowed only on the Missouri River, below the ordinary high water mark. See map for closure locations along the river or call for specifics.
- Be aware that non-hunters also use these areas. Consider your shot fallout in relation to hikers, fishermen, boaters, park visitors, wildlife viewers, and other hunters.
- Never shoot over the south shoreline of the river. All shooting should be over open water.
- You must have a means of retrieving your downed waterfowl (a dog or a boat is recommended), and you must make a reasonable effort to retrieve all dead and injured birds.
- Clean up all your litter, including empty shotgun shells! The penalty for littering includes forfeiture of hunting, fishing and trapping privileges for 1 year.
- Use existing trails and paths to access hunting areas.

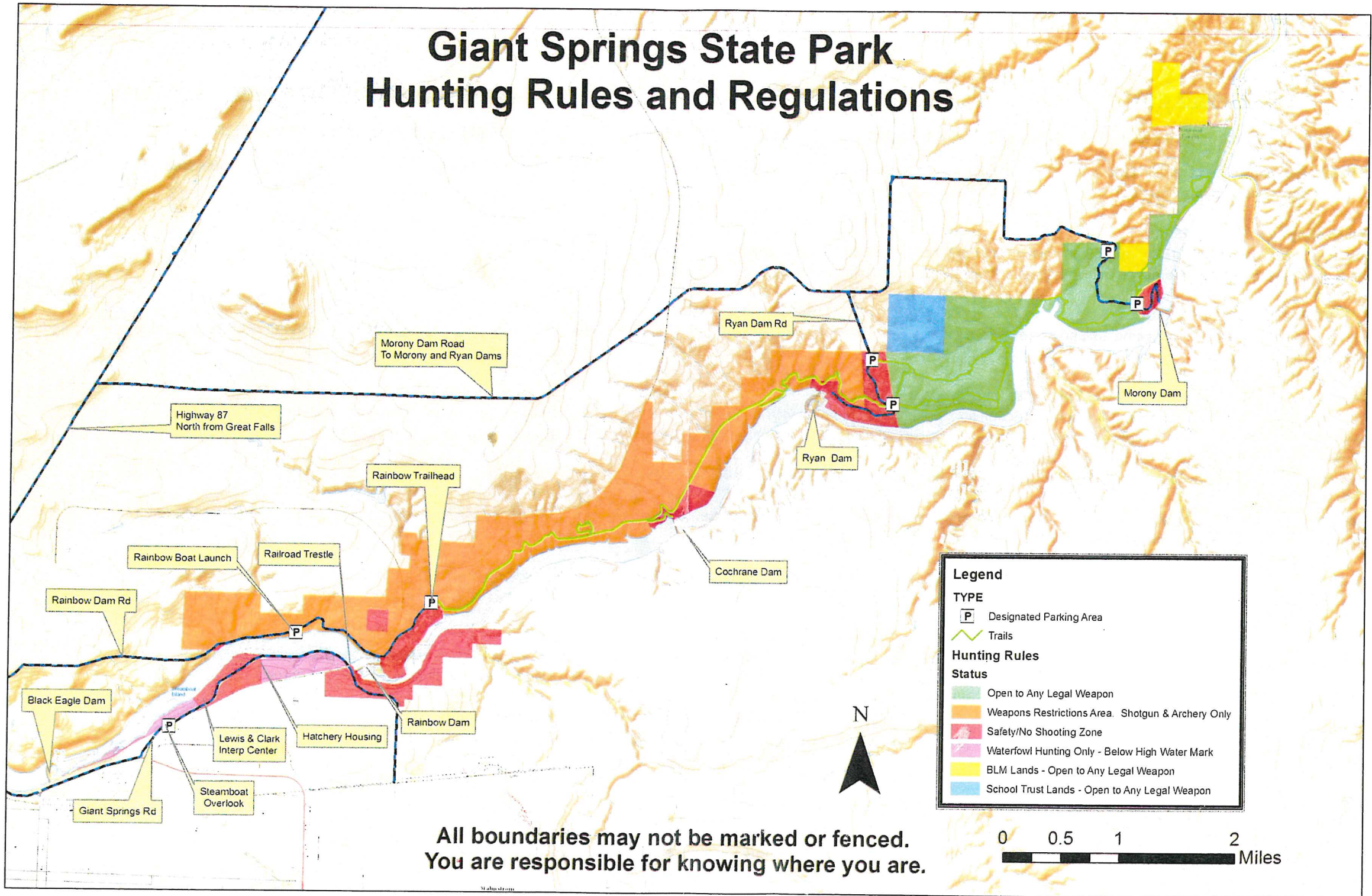


Giant Springs State Park
4803 GIANT SPRINGS ROAD
GREAT FALLS, MT 59405

For information or to report violations call: (406)727-1212 or by calling: 1-800-TIP-MONT



Giant Springs State Park Hunting Rules and Regulations



All boundaries may not be marked or fenced.
You are responsible for knowing where you are.

Legend

TYPE

- P Designated Parking Area
- Trails

Hunting Rules

Status

- Open to Any Legal Weapon
- Weapons Restrictions Area - Shotgun & Archery Only
- Safety/No Shooting Zone
- Waterfowl Hunting Only - Below High Water Mark
- BLM Lands - Open to Any Legal Weapon
- School Trust Lands - Open to Any Legal Weapon

