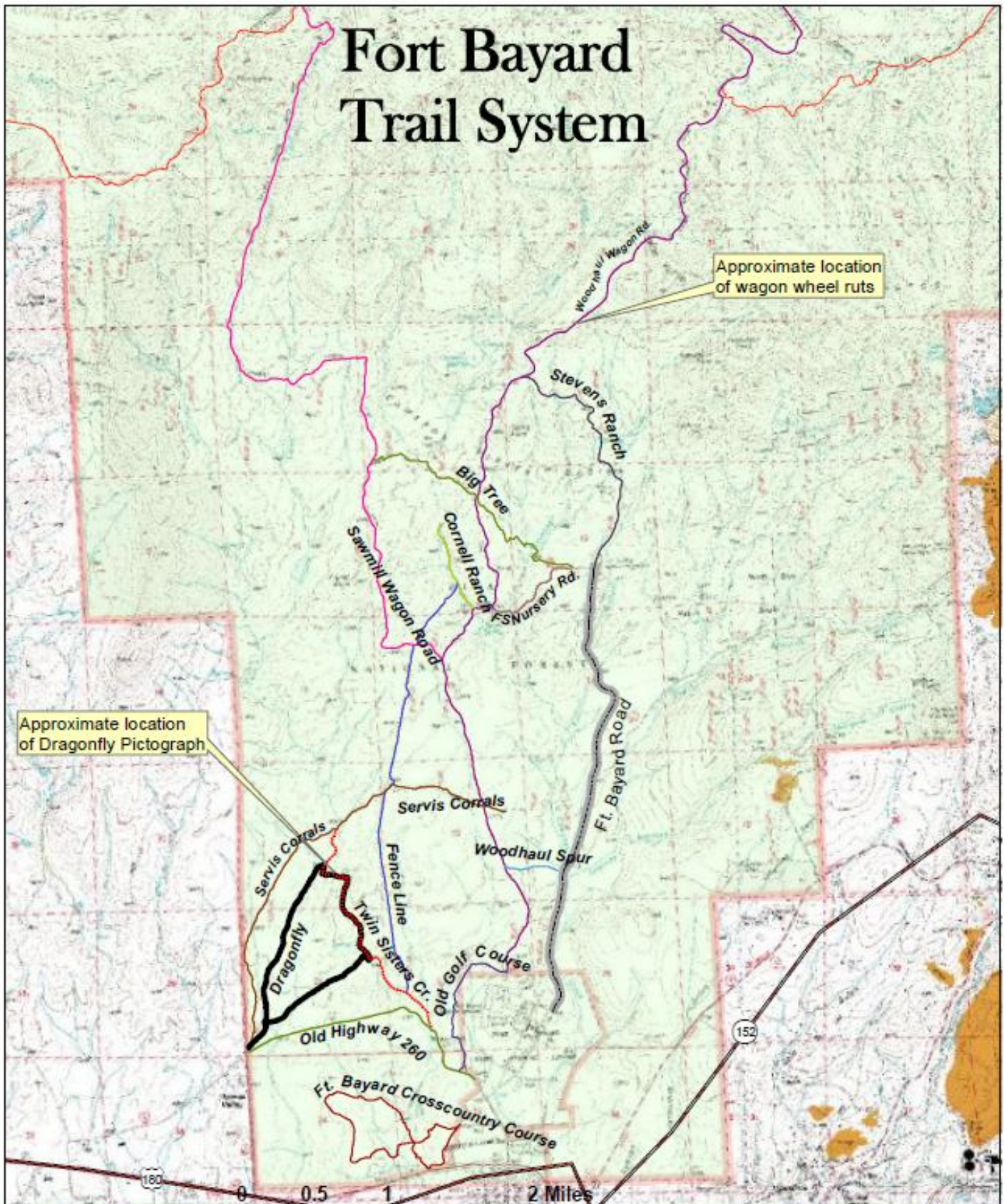


# Fort Bayard Trail System



**Ft. Bayard Trails:**

- Big Tree TrNo755
- Woodhaul Wagon Rd TrNo55
- Stevens Ranch TrNo756
- Forest Nursery TrNo757
- Cornell Ranch TrNo758
- Dragonfly Loop TrNo720
- Twin Sisters Creek TrNo726
- Fence Line TrNo727
- Servis Corrals TrNo725
- Sawmill Wagon Rd TrNo243
- Woodhaul Spur TrNo55C
- Old Hwy 260 TrNo260
- Old Golf Course TrNo723
- Ft Bayard Cross Country Course Tr
- Forest Boundary



## Fort Bayard Trail System - Day Use Only

TRAIL NAME	NO.	MILEAGE	LEVEL	DESCRIPTION
BIG TREE TRAIL	755	2 MILES	EASY	Varied landscape, popular trail but still sense of openness, popular destination being Big Juniper Tree
WOODHAUL WAGON RD. TR.	55	11.5 MILES	MODERATE TO DIFFICULT	One leg of various loops from Big Tree Trailhead. Connects to Signal Peak Trail system. Popular destination: old wagon wheel ruts just north of junction with Stevens Ranch Trail No. 756.
SAWMILL WAGON RD. TRAIL	243	7 MILES	MODERATE	One leg of various loops from Big Tree Trailhead. Connects to Continental Divide Trail system.
FOREST NURSERY RD. TRAIL	757	¾ MILE	MODERATE	Old route taken by wagon to water nursery plants from Cameron Creek. Popular route with cyclists and equestrians.
STEVENS RANCH TRAIL	756	2 MILES	MODERATE	Old service road used to access water system for old Fort Bayard. One leg of various loops from Big Tree Trailhead. Heavily wooded in some locations. Wildlife sightings are common on this route.
CORNELL RANCH TRAIL	758	¾ MILE	MODERATE	Short trail that connects Sawmill Wagon Rd Trail to Cameron Creek. A possible leg for a loop to Big Tree Trail.
DRAGONFLY LOOP TRAIL	720	3 MILES	MODERATE	Very popular loop accessed by Dragonfly Trailhead in Arenas Valley. Popular destination: various pictographs at Dragonfly site. Water often found in Twin Sisters Creek.
OLD HWY 260 TRAIL	260	2 MILES	EASY	Wide easy hike from the Dragonfly Trailhead. Asphalt roadbed from old highway leads to Twin Sisters Creek. One leg of a loop with Twin Sisters Creek Trail. Gradual altitude gain means nice vistas of Old Fort Bayard, game refuge, and surrounding mountains.
TWIN SISTERS CREEK TRAIL	726	2 MILES	MODERATE	One leg of a variety of loops from Dragonfly Trailhead. Varied landscape weaving in and out of the Twin Sisters Creek drainage. Often water found in Twin Sisters Creek.

FENCE LINE TRAIL	727	2.5 MILES	DIFFICULT	Steep, sometimes rocky trail that forms one leg of a variety of trails. Original trail was formed by cattle and horse traffic along the pasture fence line. Consistent sun exposure making a good winter trail route.
SERVIS CORRALS TRAIL	725	3.25 MILES	MODERATE	Trail that leads to the Servis Corrals – named for Sam Servis. Servis worked on the Gila NF from 1952 – 1967. He spent a lot of time out at Fort Bayard with the FS horses and mules, and they were kept in the Antelope pasture. This trail forms one leg of a variety of loops originating at Dragonfly Trailhead.
WOODHAUL SPUR TRAIL	55C	1/3 MILE	EASY	A short user-created trail that passes through open grassland and gains easy access to the Woodhaul Wagon Rd. Trail from the main Ft. Bayard Road.
OLD GOLF COUSE TRAIL	723	1 MILE	EASY	This trail circumscribes the old Fort Bayard Golf Course used by fort residents since the turn of the century when the officers and soldiers teed-off.
FORT BAYARD CROSS COUNTRY TRAIL	722	3	EASY	This trail was originally created for use by Cobre HS Indian Cross Country Team from the neighboring town of Bayard. It is exactly 3 miles long and follows a weaving route near the Bataan Memorial Park in Santa Clara. It is accessed at the back of the park.

### **Fort Bayard Trail System - Day Use Only**

**Note:** *For more detailed trail information of the Fort Bayard Trail System and surrounding area, the following USGS topographic quadrangle maps are recommended: Fort Bayard; Twin Sisters; Allie Canyon*

*USGS topographic quad maps can be purchased from the US Geological Survey: <https://store.usgs.gov/> or by calling toll-free **1-888-ASK-USGS** (1-888-275-8747)*