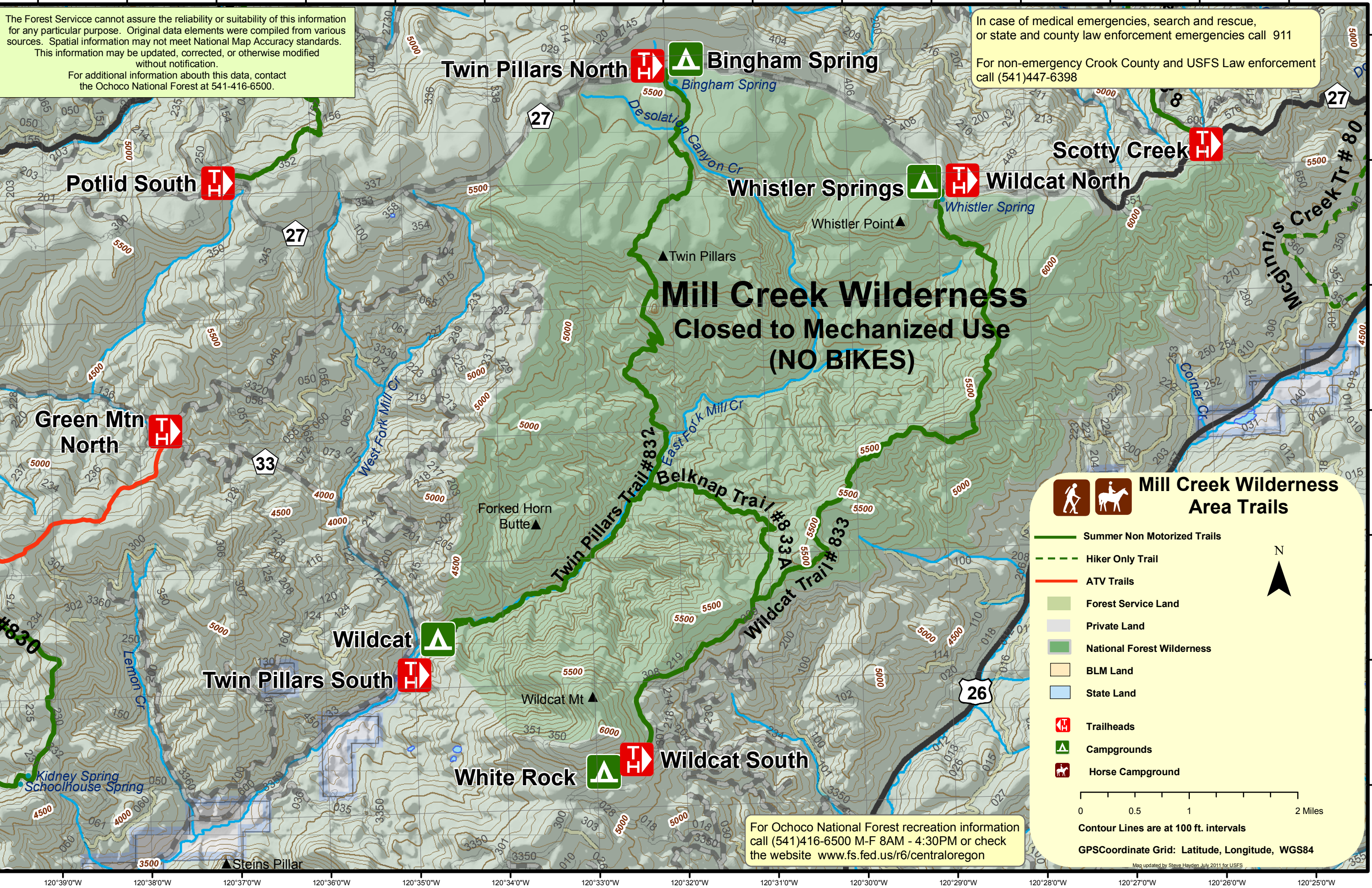


The Forest Service cannot assure the reliability or suitability of this information for any particular purpose. Original data elements were compiled from various sources. Spatial information may not meet National Map Accuracy standards. This information may be updated, corrected, or otherwise modified without notification. For additional information about this data, contact the Ochoco National Forest at 541-416-6500.

In case of medical emergencies, search and rescue, or state and county law enforcement emergencies call 911. For non-emergency Crook County and USFS Law enforcement call (541)447-6398



**Mill Creek Wilderness**  
Closed to Mechanized Use  
(NO BIKES)

**Mill Creek Wilderness Area Trails**

- Summer Non Motorized Trails
- Hiker Only Trail
- ATV Trails
- Forest Service Land
- Private Land
- National Forest Wilderness
- BLM Land
- State Land
- Trailheads
- Campgrounds
- Horse Campground

0 0.5 1 2 Miles

Contour Lines are at 100 ft. intervals

GPSCoordinate Grid: Latitude, Longitude, WGS84

For Ochoco National Forest recreation information call (541)416-6500 M-F 8AM - 4:30PM or check the website [www.fs.fed.us/r6/centraloregon](http://www.fs.fed.us/r6/centraloregon)

Map updated by Steve Hayden July 2011 for USFS