



# Two Lakes Trail

Hoosier National Forest



FS-R9-014 - 3/2015

## Description

Approximate Length: The Two Lakes trail is 15.7 miles, the Celina Interpretive Trail is 1 mile.

Type: Hiking.

Special Features: Scenic views of Indian and Celina Lakes, rock outcrops, and a variety of forest types including tall pine, native hardwoods and bottomland species. The trail includes several cutoffs creating many options for trail lengths.

The 1-mile interpretive trail to the Rickenbaugh House is linked to this trail and passes by the historic site and the Celina Lake boat ramp. Twelve interpretive stops are signed along this trail.

The main trail is marked with white diamonds, and the connector trails are marked with orange diamonds.

## Etiquette and Rules

Motorized vehicles, mountain bikes, and horses are not permitted on this trail.

Pack out your trash.

## Safety

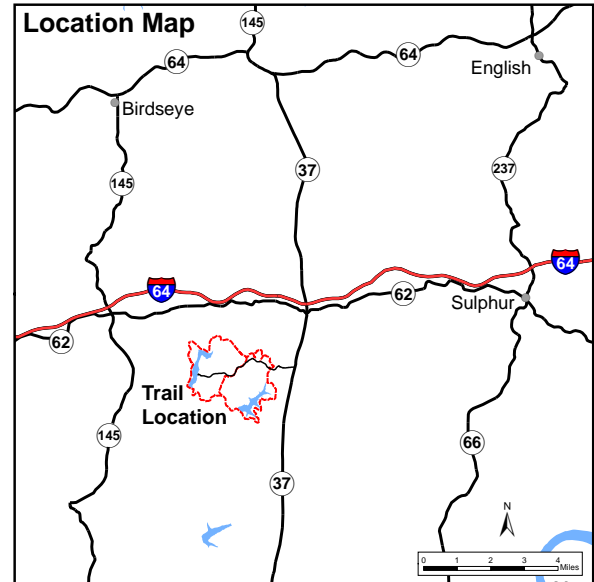
Use caution during hunting seasons. Blaze orange clothing is recommended (do not wear white) during deer season.

Many trails intersect roadways. If you choose to use a road as part of your trip, be mindful of traffic.

Map may contain errors, no guarantee is made to its accuracy.

## Emergencies

- Nearest public phone is located at Celina South Slope campground (summer only) or Circle S Food Mart on State Road 37.
- Nearest hospital is located in Tell City, IN.
- Perry County Sheriff: 812-547-7068 or 911.
- Indiana Conservation Officers: 812-837-9536.



## Facilities

Parking is available (see map on reverse) but a parking fee is charged from April 15 through October 15. If you wish to camp, please call the Hoosier or visit the website below for current fees and operating seasons. Camping, picnicking, boating and fishing are also available at Celina and Indian Lakes. The recreation area is open year-round, but services are reduced in winter.

## Directions

From I-64 turn on IN 37 south (Exit 79). Take IN 37 south approximately 2 miles to Indian and Celina Lake Recreation Area. There are several parking areas within this recreation area.

GPS Coordinates for the Indian-Celina Lake Area: 38°11'56.66"N, 86°35'53.95"W

## For More Information:

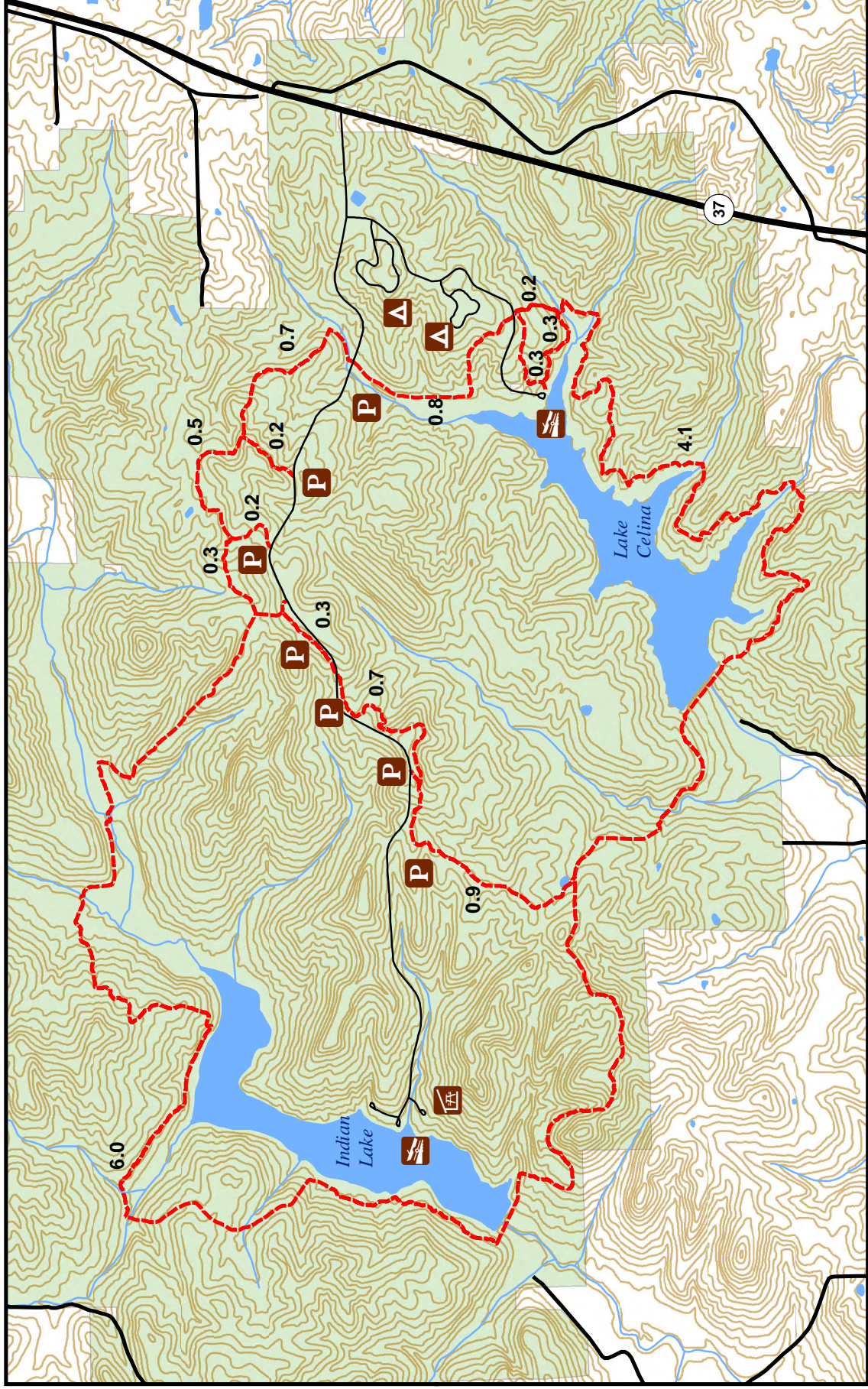
Hoosier National Forest  
248 15<sup>th</sup> Street; Tell City, IN 47586  
(812) 547-7051  
Toll Free: 1-866-302-4173  
[www.fs.usda.gov/hoosier](http://www.fs.usda.gov/hoosier)

Federal Relay Number for the deaf and hearing impaired is: 1-800-877-8339



Forest Service

# Two Lakes Trail



eengstrom 2/20/2015



## Legend

-  Trail
-  Road
-  20' Contour
-  Water
-  Water
-  Forest Service
-  Parking
-  Camping
-  Picnic Area
-  Boat Launch
-  Miles Between Intersections

Large Print Version Available