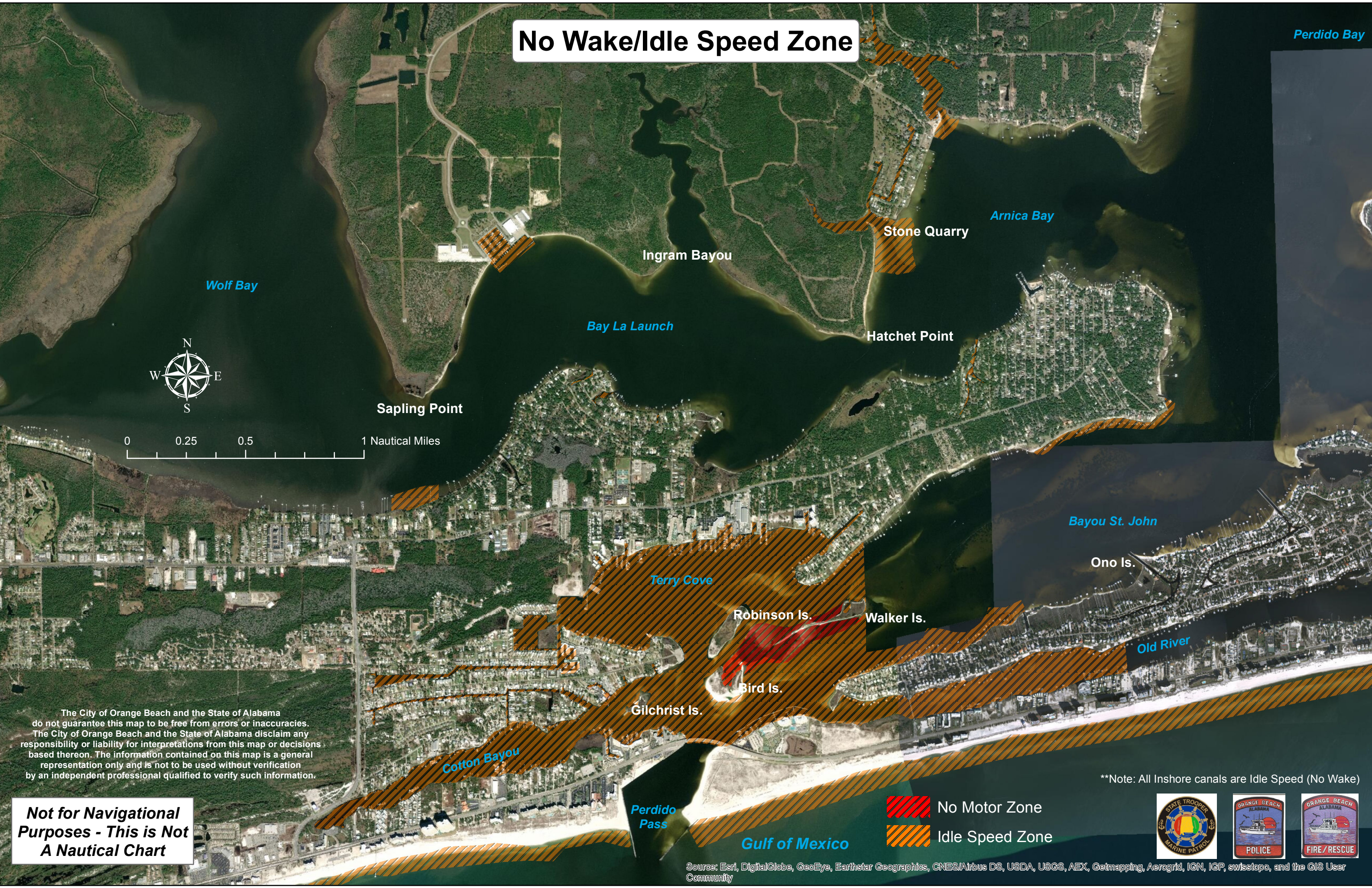


No Wake/Idle Speed Zone



Perdido Bay

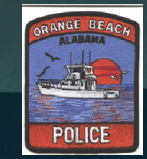


The City of Orange Beach and the State of Alabama do not guarantee this map to be free from errors or inaccuracies. The City of Orange Beach and the State of Alabama disclaim any responsibility or liability for interpretations from this map or decisions based thereon. The information contained on this map is a general representation only and is not to be used without verification by an independent professional qualified to verify such information.

Not for Navigational Purposes - This is Not A Nautical Chart

**Note: All Inshore canals are Idle Speed (No Wake)

-  No Motor Zone
-  Idle Speed Zone



Source: Esri, DigitalGlobe, GeoEye, Earthstar Geographics, CNES/Airbus DS, USDA, USGS, AEX, Getmapping, Aerogrid, IGN, IGP, swisstopo, and the GIS User Community