

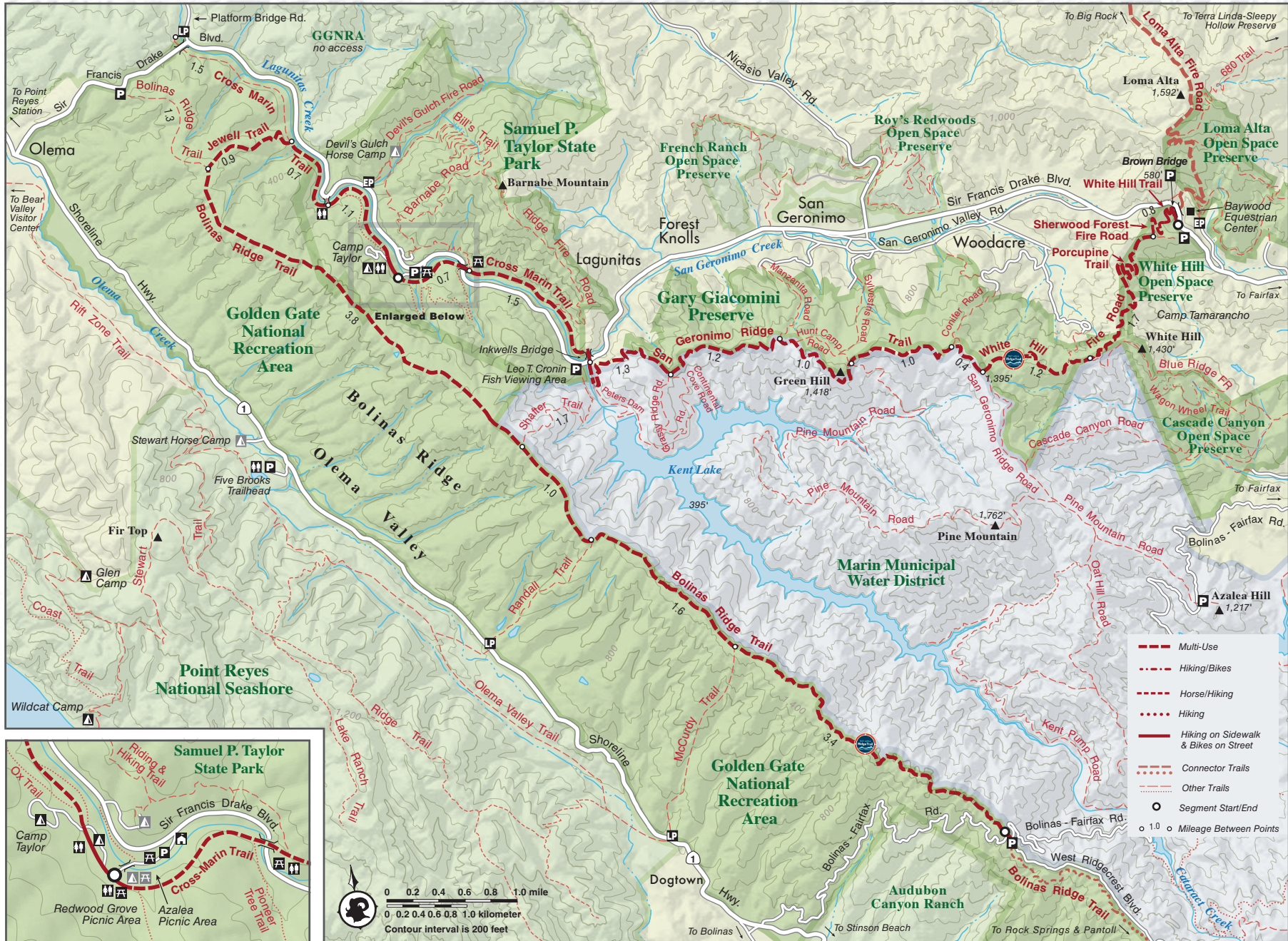


Samuel P. Taylor State Park to White Hill Open Space Preserve

Marin County

From: State Park Entrance in Lagunitas

To: Brown Bridge in Fairfax



Post your photos @bayarearidgetrail and see them on our website. #bayarearidgetrail



Samuel P. Taylor State Park to White Hill Open Space Preserve

From: State Park Entrance in Lagunitas

To: Brown Bridge in Fairfax

Length: : 10.8 miles one-way; car shuttle possible.

Elevation Gain/Loss: 1,540 feet/1,265 feet one-way

Accessibility: Hikers, equestrians, and mountain bikers

This segment starts in the valley on the old railroad trail then climbs to San Geronimo Ridge. The ridge fire road is long and undulating, with rewarding 360-degree views of the North Bay, and deep canyons and wooded ridges crowned by Mount Tamalpais. The route feels remote and has a dramatic view down to scenic Kent Lake. After reaching its highest elevations in a unique Sargent cypress forest, the trail descends through White Hill Open Space Preserve, offering more beautiful views.

This trail description is excerpted from the 2019 Guidebook. For details on all trails, trailheads and more [buy the book](#) from Wilderness Press.

For more resources to plan your trip, visit our [Trail Tools](#) page.

LINK to buy book: <https://advkeen.co/BayAreaRidgeTrail>

LINK to Trail Tools: <https://ridgetrail.org/trail-tools/>

Post your photos **@bayarearidgetrail** and see them on our website. **#bayarearidgetrail**